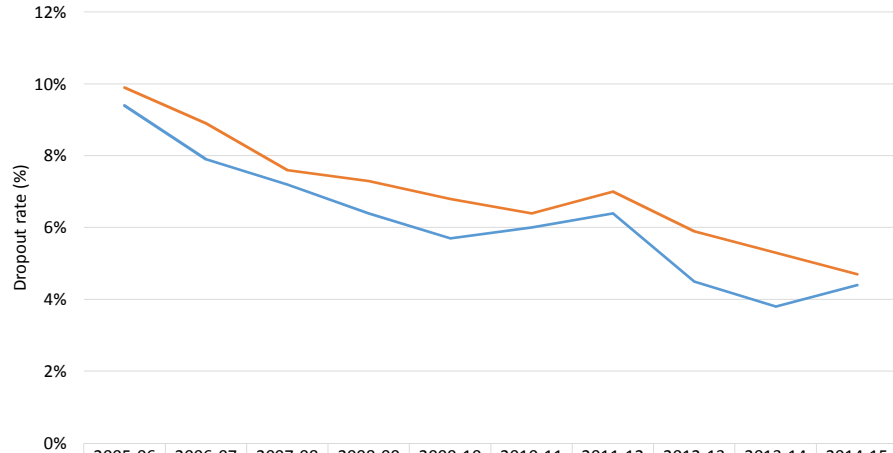
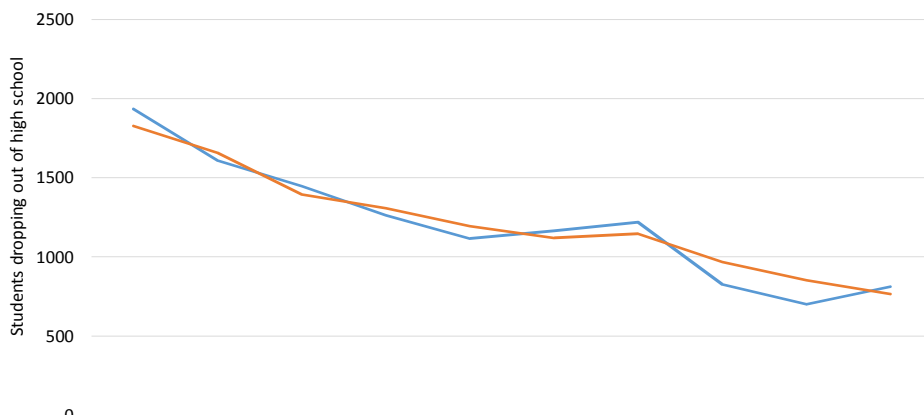


Boston Public Schools Annual Dropout Rates, 2006-2015



	2005-06	2006-07	2007-08	2008-09	2009-10	2010-11	2011-12	2012-13	2013-14	2014-15
BPS Report	9.4%	7.9%	7.2%	6.4%	5.7%	6.0%	6.4%	4.5%	3.8%	4.4%
DESE Report	9.9%	8.9%	7.6%	7.3%	6.8%	6.4%	7.0%	5.9%	5.3%	4.7%

Boston Public Schools Dropout Totals, 2006-2015



	2005-06	2006-07	2007-08	2008-09	2009-10	2010-11	2011-12	2012-13	2013-14	2014-15
BPS	1936	1610	1447	1264	1116	1165	1219	828	701	812
DESE	1827	1659	1396	1308	1196	1121	1146	969	854	766

